

G

Charles Girardier



BRAND PORTFOLIO

2024/1 - EN



# CHARLES GIRARDIER BRAND PORTFOLIO

The Charles Girardier Brand Portfolio transcends mere presentation. It unfolds as a captivating narrative of the manufacture's rebirth, an enthralling quest to revive this prestigious marque.

**This tome illuminates our corporate vision**, drawing from the ancestral techniques of "Girardier L'ainé" to shed light on contemporary models. It unveils the richness of our horological heritage and offers an intimate glimpse into our past and present journey, etched within the pages of our history.

Inspired by the aesthetic lineage left by "Girardier L'ainé," this graphic and technical portfolio embodies the very essence of our brand while projecting our vision and commitment towards the future.



Portrait of Charles Antoine Girardier, known as "Girardier L'ainé". (1759 - 1839).



# THE BRAND CHARLES GIRARDIER

It's the captivating story of a resurgence, a revival dedicated to exceptional watchmaking. A prestigious Geneva watchmaking house, dormant since the passing of its creator in 1839, rises from its ashes in 2018 with a determination to inscribe its name once again in the grand saga of watchmaking.

Charles Antoine Girardier, known as "Girardier L'ainé," was a master watchmaker active in Geneva from the second half of the 18<sup>th</sup> century to the early 19<sup>th</sup> century. **His renown rested on his expertise in Geneva enamelling, characterized by hand-painted miniatures on the dials of his clocks.** He was also passionate about mechanical art and was known for his creations of animated scenes (*saynètes*), including automatons, including the famous *Jaquemarts*. (A *Jaquemart* is a piece of artistic automaton, depicting a finely carved character in wood or metal, gracefully integrated into a clock to strike the hours using a hammer to strike a bell.)

In 2018, Patrick Alexandre Ulm, the spiritual successor of Charles Girardier, explores the past of the Geneva watchmaker through the acquisition of antique pieces at auctions. This revelation triggers the birth of a new chapter for the House of Charles Girardier, once dormant.

Guided by fervent passion, he envisions and conceptualizes the rebirth of this watchmaking brand in a contemporary version while preserving its historical heritage. This new chapter celebrates the 18<sup>th</sup>-century watchmaker while appropriating the codes of the present.

With unwavering dedication, Patrick Alexandre Ulm strives to perpetuate these values and breathe new life into the Charles Girardier brand, while retaining the essence of this ancient watchmaking manufacture.



Portrait of Patrick Alexandre Ulm in his watchmaking hub in Buchs, a small town in the canton of Aargau in German-speaking Switzerland.

# THE WORLD OF PATRICK ALEXANDRE ULM, CEO

It is both a pleasure and an infinite privilege to welcome you into the refined universe of the Charles Girardier brand, and to unveil to you the odyssey of a renaissance in the centuries-old horological heritage.

A delight, for there is nothing more rewarding than sharing a passion. While chronicling the twists and turns of history, the brand's portfolio, now in your hands, captures the pioneering spirit that elevated "Girardier L'ainé" to the forefront of Geneva's watchmaking elite, at a time when the city asserted itself as the epicentre of *Haute Horlogerie*.

This pioneering spirit, imbued with determination, lies at the very heart of the renaissance initiated in 2018.

The privilege, meanwhile, lies in narrating our story to connoisseurs of fine watchmaking, to enthusiasts of exceptional timepieces.

The integrated movement of the new "Plénitude" Collection, developed in this year 2024 within the watchmaking hub of Buchs, masterfully illustrates this commitment.

**Join us in this endless quest for Excellence!**

# INTRODUCTION

Charles Antoine Girardier (1759-1839), often referred to and signing his creations under the name of “Girardier L’ainé,” was a distinguished and pioneering watchmaker who left an indelible mark on horology during his time.

Operating in Geneva from the second half of the 18<sup>th</sup> century to the early 19<sup>th</sup> century, he particularly distinguished himself for his complex horological achievements, showcasing complications such as the *Jaquemart* automaton, miniature enamel paintings, and the complication that caught the particular attention of our future CEO: the **quarter repeater**.

These features were not just technical feats but also added a dimension of visual intrigue to his creations. He employed traditional goldsmithing techniques such as hand engraving, *guilloché* work, the art of arabesques, and enamel painting, thereby imparting unmatched uniqueness to his pieces.

His unwavering commitment to authenticity and uniqueness earned him widespread recognition. He was sought after to design watches for eminent personalities of his time, including royalty and political leaders.

Despite his significant contributions, the name of Girardier remained silent for nearly two centuries after his passing.

It wasn’t until 2018 that the brand was resurrected by Patrick Alexandre Ulm, an entrepreneur from Geneva, who, aware of the historical significance of Charles Girardier’s work, aspired to perpetuate his legacy by creating timepieces that blend traditional craftsmanship with modern technology.

This legacy finds continuity through the brand that bears his name today, continuing to captivate watch enthusiasts worldwide by drawing inspiration from his pocket watches, exhibited in museums or held by collectors.



---

## Pocket watch

Geneva, circa 1815

Silver case.

Engraved silver scene, pierced and engraved *vermeil*, engraved and chiselled.

Hours and minutes indication on a white dial, with Arabic numerals and hour and minute indexes painted in black.

Numbered, stamped in the movement “2 / I5I64”.

Stamp; numbered, stamped in the bottom “L / I5I64”.

Key-winding.

Dial signed “Girardier A. GENEVE”.

Diameter: ø 56.5 mm – Thickness: 23 mm.

Geneva Museum, inventory N 0075.





Very rare quarter repeater pocket watch with  
*Jaquemart* automata

Geneva, circa 1815.

Silver case.

Quarter repeater on 2 gongs, animated by a scene  
of two chiselled gold automata.

Hours and minutes indication on a white porcelain dial  
at the centre of the scene, with Arabic numerals and hour  
and minute indexes painted in black.

Gilded brass movement, manually wound by key.

Silvered metal disc with advance/retard adjustment.

Signed "Girardier Lainé" and numbered "N°31".

Diameter: ø 54.8 mm - Thickness: 22.5 mm.

# TO COMPREHEND THE PAST IS TO ENVISION THE FUTURE WITH OPULENCE!

Some Girardier pocket watches are referenced in horological books such as “*Histoire et Technique de la Montre / Société suisse de chronométrie*” dating back to 1950.

The restoration of antique watches holds particular significance, transcending the simple act of refurbishment to become an experience that links the past to the present. These horological pieces, bearing centuries-old stories, are more than mere objects. They are witnesses of time, guardians of exceptional craftsmanship that have marked different epochs.

Restoring an antique watch is primarily about preserving a horological heritage of immeasurable wealth. These timepieces were crafted by passionate artisans, masters in the art of fine mechanics. Every component, every detail, tells the story of a bygone era, reflecting the evolution of techniques and the aesthetic refinement of their time.

Each renovated antique watch thus becomes the result of a collaboration between the past and the present. It embodies a tangible connection with the history of horology and the skilled hands that once shaped its mechanisms. It is also an opportunity to learn and perpetuate *artisanal* techniques that, without this effort, could fade over time.

The restoration of antique watches offers an immersive experience, a dive into the creative genius of their past designers. It is a way to celebrate horological heritage while allowing these functional works of art to come back to life and find a legitimate place in our contemporary daily lives. By restoring an antique watch, we not only honour its past but also create a bridge between generations, sharing the fascination for horology through time.







... fin de XVIIIes.  
... 1789. Ma  
... Excels.  
... mun

...veil sur timbre cloche, double b  
Mouvement Allie  
Girardier P  
de Genè





**Calibre des XVIII<sup>e</sup> et XIX<sup>e</sup> siècles** (Type du cadran du milieu du XVIII<sup>e</sup> à gros chiffres pour la  
Fonds; Coll. M. Robert). — Métal, gravé et ciselé; Pre F-c Calame à La Chaux-de-Fonds  
Th. Beyer). — Email peint; Maillardet à Fontaines. — **Métal repoussé**;  
point aux guilloché; Robert et Courvoisier à La Chaux-de-Fonds (Coll. M.  
PL. 90

Calibre du XIX<sup>e</sup> siècle. Montre, Akhadi et Comp. à Genève. —  
Métal, gravé et ciselé; Maillardet à Fontaines.  
— Montre, Robert et Courvoisier, La Chaux-de-Fonds.  
— Montre, Courvoisier et Comp. à deux tours d'heures et quart.  
— Horloger, constantes dans l'ancien cadran, argent guilloché.





# OUR PRESTIGIOUS COLLECTION OF ANTIQUE WATCHES BY CHARLES GIRARDIER

The acquisition by Patrick Alexandre Ulm of Charles Girardier timepieces, obtained from prestigious auctions, represents a centrepiece in the construction of the brand's current universe. Each of these carefully selected antique watches not only bears witness to the rich horological heritage but also embodies the Maison's commitment to preserving and celebrating the timeless art of watchmaking.

Patrick Alexandre Ulm's commitment to bringing together these horological treasures goes beyond mere acquisition. It is a passionate endeavour aimed at merging heritage and innovation, weaving connections between the past and the present. Once restored and showcased, these antique watches become ambassadors of the brand's soul, thereby contributing to creating a universe where horological excellence transcends eras.

---

## Pocket watch in silver

Geneva, circa 1800.

Silver case, hallmarked "DCO 16034" and annotated: "x 204" - "x 1313" - "x 1646".

Polychrome porcelain dial with miniature painting depicting a hunting scene, possibly by the shores of Lake Geneva.

Hours and minutes indication at 12 o'clock with Breguet numerals and black-painted indexes.

Gilded brass movement, manual winding by key, engraved and numbered, "Girardier L'ainé N°1444".

Silvered metal disc with advance/retard adjustment.

Complication: 6 o'clock aperture, gilt brass disc, 4 (presumed) deer painted in black rotating approximately every 38 to 40 seconds.

Diameter: ø 53 mm - Thickness: 22.1 mm.



Chain with winding key.

---

Pocket watch in silver

Geneva, circa 1800.

Silver case.

White porcelain dial.

Hours and minutes indication with Arabic numerals and hour and minute indexes painted in black.

Gilded brass movement, manual winding by key, engraved and numbered "Girardier L'ainé N° 5802".

Silvered metal disc with advance/retard adjustment.

Dial signed "Girardier L'ainé".

Diameter: ø 51.10 mm - Thickness: 22.1 mm.



---

Pocket watch in silver

Geneva, circa 1800.

Silver case engraved "JC".

Polychrome porcelain dial with miniature painting depicting a dancer in a garden.

At 6 o'clock: Hours and minutes indication with Arabic numerals and black-painted indexes.

Complication: Date at 12 o'clock, Arabic numerals painted in black.

Gilded brass movement, manual winding by key, engraved "Girardier L'ainé".

Silvered metal disc with advance/retard adjustment.

Dial signed "Girardier L'ainé".

Diameter: ø 57.1 mm - Thickness: 20.09 mm.



---

Pocket watch in silver

Geneva, circa 1800.

Silver case, hallmarked "I 252 I".

Dial with miniature painting on *champlevé* enamel and hand engraving.

Hours and minutes indication on a *guilloché* gold dial, with Arabic numerals and hour and minute indexes painted in black.

Gilded brass movement, manual winding by key, engraved "Girardier L'ainé" and "M".

Silvered metal disc with advance/retard adjustment.

Diameter: ø 51 mm - Thickness: 20 mm.



# TIMELESS HOROLOGICAL TECHNIQUES

Our vision revolves around the creation of timeless timepieces that preserve the classical techniques of watchmaking used over two centuries ago. This is accompanied by a commitment to embracing modern designs while showcasing expert craftsmanship. We aspire for your timepiece to become an elegant reminder of an ancient tradition, embodying a durability as immutable as time itself.

Each creation we conceive is imbued with this vision, offering a harmonious alliance between the past and the present. Thus, your watch becomes much more than a mere timekeeping instrument; it becomes a timeless horological piece, a witness to a rich and eternal history.



## ENAMELLING

The delicate art of enamelling, often practiced by prestigious manufactures, represents the pinnacle of watchmaking craftsmanship. This demanding process involves the meticulous fusion of glass powder at extremely high temperatures, a true challenge for artisans. At Charles Girardier, this complex technique is used to adorn our dials, creating pieces with vibrant and enduring designs.

Every step of the process, from the careful preparation of coloured glass powder to the delicate application on a prepared metal surface, requires exceptional expertise and craftsmanship. Repeated firing at high temperatures results in an ultra-resistant surface fused with the metal base.

Enamel artisans, true artists, are also alchemists and visionaries. They anticipate the complex interactions between pigments, ensure colour stability, and envision the final nuances.

Various ancestral techniques, such as *cloisonné*, *champlevé*, *paillonné*, and miniature painting on enamel, are implemented with precision to create pieces of dazzling and timeless beauty. Enamelling thus becomes a dialogue between tradition and innovation, embodying the quintessence of high-end watchmaking craftsmanship.





## ENAMELLING TECHNIQUES

The Fine Art of Enamelling reveals itself through five distinct techniques, each employed with precision by the rare enamel artisans who master their subtleties.

In the *cloisonné* technique, a delicate gold wire, often less than 0.5 mm in diameter, is skilfully bent and curved to draw shapes on a plate previously coated with a thin layer of enamel. After an initial firing, the delineated shapes are filled with various enamels, sometimes requiring multiple trips to the kiln to achieve the desired nuances, transparencies, and depths.

The *champlevé* method, similar to the previous one, involves depositing enamel in cells, but the plate is pre-carved. This process, sometimes mechanical for simple patterns, becomes a complex manual task for unique pieces. The enameller fills the spaces previously hand-engraved, adding a palette of nuances and colours.

The *paillonné* technique, on the other hand, showcases tiny leaves of gold or silver cut into intricate patterns, called *paillons*, integrated into layers of transparent enamel.

*Miniature painting on enamel*, the rarest, stands out for its unique approach. From the start, the enamel is worked differently, mixed with oil instead of water. Delicately applied with a fine brush on a first layer of enamel, this method allows for the miniature reproduction of pictorial masterpieces, expressive portraits, lively landscapes, or complex scenes.

The *camaïeu* enamelling technique is a refined artistic method that involves using subtle shades of a single enamel colour to create a monochromatic gradient effect. This delicate approach emphasizes the richness of tones in a single colour, ranging from light to dark, to produce a subtle and nuanced palette.

In this technique, the enamel artist works with a limited palette of colours from the same family, creating visual harmony through a gentle gradation. Each shade is precisely applied to the prepared metal surface, then fired at high temperatures to fuse with the base. This process is repeated several times, allowing the artist to play with variations in tones and create captivating visual effects.

*Camaïeu* enamelling requires meticulous expertise to achieve a perfect balance between shades and to ensure a smooth transition from one tone to another. The final result is an enamelled work of art of timeless elegance, where mastery of colour and the subtlety of gradation combine to create a unique and refined piece.

The use of *champlevé* and *paillonné* enamel for our dials in the 1809 Collection, 37 mm.



Our "The Magic 8®" collection is the perfect example of the use of *camaïeu* enamel.





TIMELESS MAGIC8®



# QUALITY IS REVEALED IN THE DETAILS!

Mastering complex decorative techniques is the essence of top watchmaking brands, where finishing and movement decorations reach exceptional heights.

Charles Girardier fully embraces this tradition, paying meticulous attention to every detail of its movements: whether it's the engraving of the dials, the *Clous de Paris* motif, the circular Geneva Stripes, the galvanic treatment, the bevelled and hand-polished bridges, the chamfering, the traditional graining of the bridges with manually applied silver powder, or even the gem-setting of bezels, tourbillon cages, and animations.

Each Charles Girardier model incorporates one or more of these watchmaking techniques that have shaped the reputation of high-end Swiss watchmaking.



G





# THE SIGNATURE MYSTÉRIEUSE® COLLECTION

The “Signature Mystérieuse®”, 1809 Collection, embodies the very essence of horological elegance, subtly fusing the initials “C&G” into an enigmatic dance, orchestrated by the movements of its wearer.

It is more than just a simple monogram; it is a tribute to the legacy of Charles Girardier, known as “Girardier L’ainé”, the Master watchmaker, whose incomparable talent in mechanical art brought to life animated scenes of breathtaking beauty.

This subtle harmony between the mysterious movement of this monogram and the reference to the exquisite craftsmanship of our Master watchmaker offers a touch of infinite elegance, propelling this ancestral heritage into the contemporary world of horological luxury.





Charles Girardier

1809 COLLECTION

37 MM

SIGNATURE MYSTÉRIEUSE®



LADIES' COMPLICATION WATCH 2020



Immerse yourself in the exclusive world of Charles Girardier with our iconic 1809 model, revealing the fascination of the “*Signature Mystérieuse*®”. This monogram, a fusion of “C&G”, dances mysteriously with the wearer’s movements, offering an infinite touch of elegance.

Equipped with a flying *tourbillon* and this exquisite mechanical complication, these watches embody the very essence of watchmaking craftsmanship. Their *Gran Feu* enamel, delicately hand-applied and precisely fired at 800°C, bestows an aura of sophistication and perfection upon these exceptional timepieces.

The enamelled dial, adorned with arabesques, discreetly enriches itself with delicate gold or silver *paillons* in the shape of a flower called “*Fleur de sel*”, adding a touch of refinement.

The “Ice Blue” version won the *Grand Prix de l’Horlogerie 2020* in the “Ladies’ Complication Watch” category.

This model is available in three versions: “Ice Blue,” featuring a glazed icy blue enamelled dial sprinkled with silver *paillons* and a white-gold case, “Green Grey,” with a sophisticated greyish-green enamelled dial sprinkled with silver *paillons* and a rose-gold case, and finally, “Dark Red,” in a deep red hue with gold *paillons* and a yellow-gold case.

These models feature our exclusive **CG SM-1809 caliber**, the hallmark of Charles Girardier’s watchmaking excellence.



Ice Blue  
WHITE-GOLD



Green Grey  
ROSE-GOLD



Dark Red  
YELLOW-GOLD

# 1809 COLLECTION

37 MM

## SIGNATURE MYSTÉRIEUSE®

### UNIQUE FEATURE

- > The *Signature Mystérieuse*® System: two mobiles moving in opposite directions depending on the position in which the watch is held.

### MOVEMENT

- > Self-winding by sun-rayed peripheral mass
- > Flying *tourbillon*
- > *Tourbillon* Cage set with 54 diamonds: 0.15 ct
- > The *Signature Mystérieuse*® System set with 12 diamonds: 0.04 ct
- > CG SM-1809/1/2/3 Caliber (Depending on the models)
- > Jewels: 32
- > Diameter: 30.6 mm
- > Thickness: 8.43 mm
- > Power reserve: 46 Hours
- > Frequency: 28,800 Vph - 4 Hz
- > Number of parts: 308
- > The bridges and plates are hand-polished and silver satin finish
- > Crown with rose-cut cabochon diamond of 0.05 ct

### DIAL

- > Available in “Ice Blue”, “Green Grey” or “Dark Red”
- > *Grand Feu* enamel with arabesque pattern
- > *Paillons* in silver or yellow-gold in the shape of flower called “*Fleur de sel*”
- > Bezel set with 60 diamonds: 0.9 ct
- > 60 seconds-flying *tourbillon*
- > Leaf-shaped hands in white or yellow-gold

### CASE

- > Available in white-gold, rose-gold or yellow-gold
- > Water resistance: 30 meters / 100 feet
- > Crystal: Sapphire, anti-reflective coating
- > Sapphire crystal case back
- > Diameter: 37 mm
- > Thickness: 11.8 mm

### STRAP

- > Colour: available in blue, grey and red
- > Material: Woven ribbon on a traditional Jacquard loom
- > Micro-metric watch band adjustment with 4 settings
- > Fold-over clasp in white, rose or yellow-gold
- > Interchangeable Presto System®

### PRICING

- > Recommended retail price: -







Charles Girardier

1809 COLLECTION

41 MM

SIGNATURE MYSTÉRIEUSE®

The 41 mm diameter variation of our flagship model 1809 beautifully showcases the irresistible allure of our iconic “Signature Mystérieuse®”. This monogram, where the initials “C&G” blend seamlessly, comes to life in an enchanting dance to the rhythm of the wearer’s movements, adding a touch of infinite elegance.

Equipped with a flying *tourbillon* and exquisite mechanical complexity, these timepieces embody the very essence of watchmaking craftsmanship. The delicately hand-applied *Grand Feu* enamel imparts an aura of sophistication and perfection to these exceptional timepieces.

Its *champlevé* enamel dial is meticulously engraved with our exclusive motif called “Chevrons.”

This model comes in three variations: “Chromium Grey”, featuring a dial matched in shades of grey and a white gold case; “Cobalt Blue”, showcasing the symbolic shade used since ancient times on Chinese porcelain, housed in a white gold case. Finally, “Black Pepper”, a colour evoking the intense and bold flavours of spices, paired with a rose gold case for a distinctive allure.

These models feature our exclusive CG SM-1809 caliber, the hallmark of Charles Girardier’s watchmaking excellence.



Chromium Grey  
WHITE-GOLD

Cobalt Blue  
WHITE-GOLD

Black Pepper  
ROSE-GOLD

# 1809 COLLECTION

## 41 MM

### SIGNATURE MYSTÉRIEUSE®

#### UNIQUE FEATURE

- > The *Signature Mystérieuse*® System: two mobiles moving in opposite directions depending on the position in which the watch is held.

#### MOVEMENT

- > Self-winding by sun-rayed peripheral mass
- > Flying *tourbillon*
- > The *Signature Mystérieuse*® System
- > CG SM-1809/4/5/6 Caliber (Depending on the models)
- > Jewels: 32
- > Diameter: 30.6 mm
- > Thickness: 8.43 mm
- > Power reserve: 46 hours
- > Frequency: 28,800 Vph - 4 Hz
- > Number of parts: 308
- > The bridges and plates are hand-polished and silver-satin finish
- > Engraved Crown

#### DIAL

- > “Chromium Grey”, “Cobalt Blue” ou “Black Pepper”
- > *Grand Feu champlevé* enamel with engraved motif called “Chevrons”
- > 60 seconds-flying *tourbillon*
- > White or rose-gold *Dauphine* hands

#### CASE

- > White or rose-gold
- > Water resistance: 30 meters / 100 feet
- > Crystal: Sapphire, anti-reflective coating
- > Sapphire crystal case back
- > Diameter: 41 mm
- > Thickness: 11.8 mm

#### STRAP

- > Colour: available in brown and blue
- > Material: Calf Leather featuring a herringbone pattern (Chromium Grey and Black Pepper models), woven ribbon on a traditional Jacquard loom (Cobalt Blue model)
- > Micro-metric watch band adjustment with 4 settings
- > Fold-over clasp in white or rose-gold
- > Interchangeable Presto System®

#### PRICE

- > Recommended retail price: -





G



# MAGIC 8<sup>®</sup> COLLECTION

Discover the timeless essence of Charles Girardier's 8080 Collection, a symphony of horological luxury. Crafted in titanium, these watches embody subtlety and understated power. Their sleek dials provide a backdrop for the dazzling brilliance of *Grand Feu* enamel, unfolding a vibrant gradient of colours, a mastered technique, the *camaïeu*.



Charles Girardier

8080 COLLECTION

41 MM

THE MAGIC 8®



Discover the timeless essence of Charles Girardier's 8080 collection, a symphony of watchmaking luxury. Carved from titanium, these watches embody subtlety and discreet power. Their clean dial provides a backdrop for the dazzling brilliance of *Grand Feu* enamel, unveiling a vibrant gradient of colours, a mastered technique known as *camaïeu*.

The raised indices gracefully mark each moment, exuding sculptural elegance, while the discreet logo leaves its distinctive mark. At the heart of this timepiece, positioned at 8 o'clock, a kinetic dance unfolds: two asymmetrical hands, unveiling the infinite elegance of the **number 8**, intertwine in a hypnotic choreography, a 60-second magical feat capturing the spirit of infinity and eternal movement.

Explore the three distinct embodiments of refinement within the collection, each capturing a unique aura. The Emerald Green dial, the Majestic Purple, and the Cobalt Blue are masterpieces, eloquently expressing their identities. Each watch comes with a black leather strap delicately stitched to match its dial, adding a touch of sophistication to the ensemble.

These models feature our exclusive **CG M8-8080 caliber**, the hallmark of Charles Girardier's watchmaking excellence.



Green  
TITANIUM

Blue  
TITANIUM

Purple  
TITANIUM

# 8080 COLLECTION

41 MM

## THE MAGIC 8®

### UNIQUE FEATURE

- > Double inverted seconds” mechanism with functions for composing and decomposing the figure “8”

### MOVEMENT

- > Self-winding by peripheral mass decorated with *Clous de Paris*
- > CG M8-8080/1/2/3 Caliber
- > Jewels: 35
- > Diameter: 30.6 mm
- > Thickness: 4.57 mm
- > Power reserve: 44 hours
- > Frequency: 28.800 Vph - 4 Hz
- > Number of parts: 278
- > Circular Geneva stripes
- > Black NAC galvanic treatment for the bridges
- > Chamfered and hand-polished bridges

### DIAL

- > Available in gradient colour: Emerald Green, Majestic Purple and Blue Cobalt
- > *Grand Feu* enamel gradient colour in *camaïeu* technique
- > White-gold *Dauphine* hands
- > Double inverted second featuring an “8”

### CASE

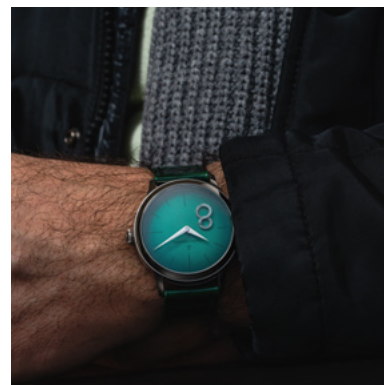
- > Polished grade 5 titanium
- > Water resistance: 30 meters / 100 feet
- > Crystal: Sapphire, anti-reflective coating
- > Sapphire crystal case back
- > Diameter: 41 mm
- > Thickness: 12.8 mm

### STRAP

- > Hand-sewn calf leather, Geneva manufacture
- > Black with stitched to match its dial
- > Micro-metric watch band adjustment with 4 settings
- > Fold-over clasp in polished steel
- > Interchangeable Presto System®

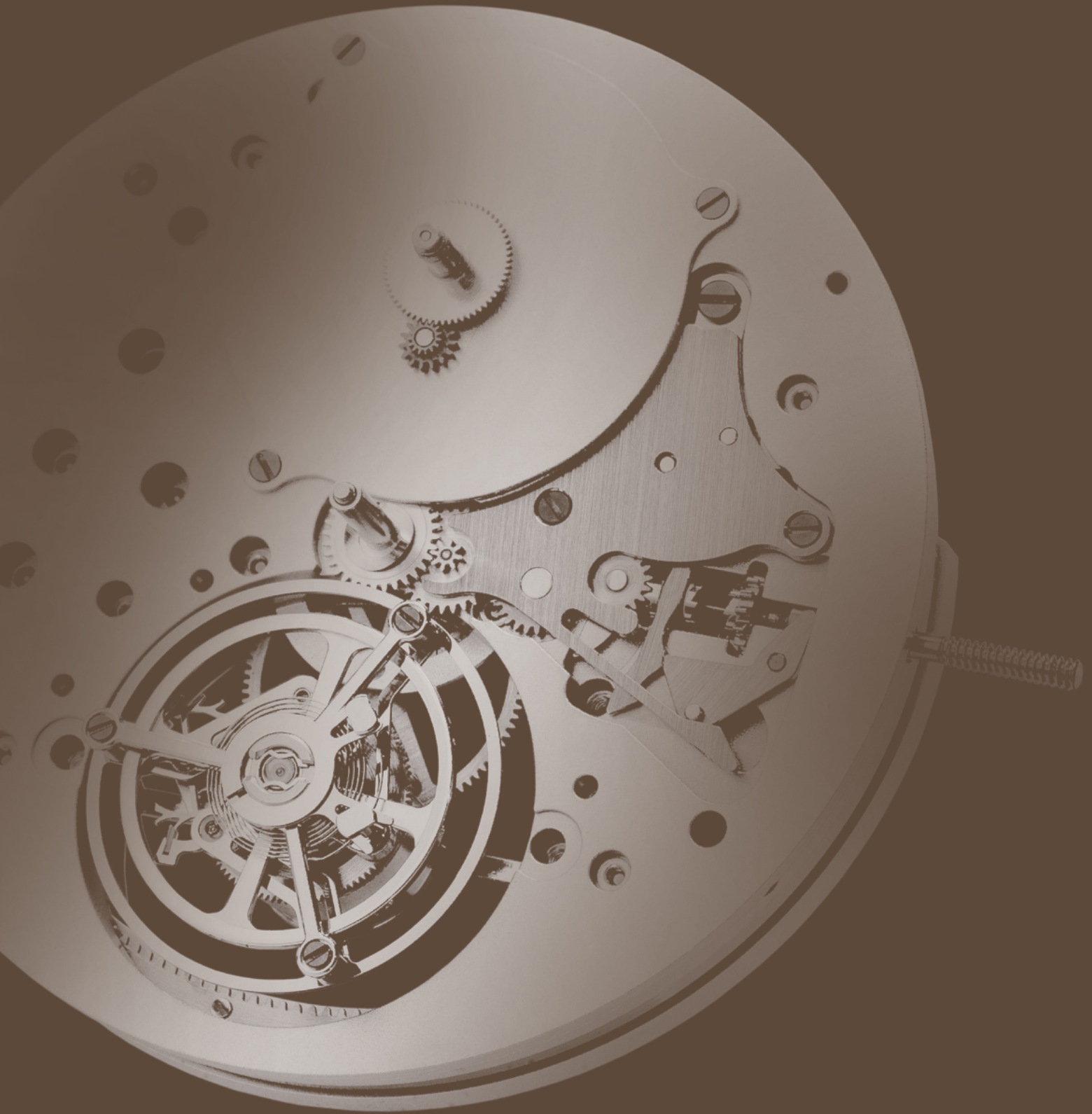
### PRICE

- > Recommended retail price: -





G



# CG SM-1809 CALIBER SIGNATURE MYSTÉRIEUSE®

Discover the horological excellence embodied in the CG SM-1809 caliber, equipping our two flagship models from the 1809 collection. At the heart of this technical feat lies the famous “*Signature Mystérieuse*®,” a masterful fusion of the initials “C&G” that animates the dial with an enchanting aura.

This exceptional caliber is composed of 308 meticulously assembled parts, each contributing to its unparalleled precision and performance. The finishes pay true homage to exceptional craftsmanship: the bridges and the main plate are grained and hand-polished, revealing a subtle and refined brilliance.

The automatic winding by peripheral rotor ensures a constant energy supply, allowing this mechanical masterpiece to beat with remarkable regularity. And to top it all off, a flying tourbillon majestically presides at 6 o'clock, defying the laws of gravity and enhancing the aesthetics of this exceptional timepiece.



Charles Girardier

CALIBRE CG SM-1809

30,6 MM

LA SIGNATURE MYSTÉRIEUSE®

Our collaboration with the Timeless manufacture has allowed us to create a unique complication based on a flying *tourbillon* movement with automatic winding by a peripheral mass. The automatic winding provides the desired comfort to the wearer without adding thickness (thickness of 8.43 mm) and maintains a clear view of the movement thanks to this bidirectional mass evolving at the periphery of the movement. The special feature of the winding system developed by Timeless is a unique ball bearing, making it a first in this type of mechanism.

The movement's decoration is refined, with bridges highlighted by traditional hand-crafted graining using the application of silver powder (frost gilt). The hand-executed bevelling on the barrel bridge and the tourbillon bridge adheres to all the codes of Geneva *Haute Horlogerie*.

**This caliber features a double complication:**

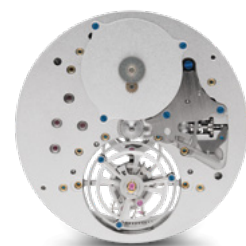
At 6 o'clock, a flying *tourbillon* enhanced by a *tourbillon* cage. The *tourbillon* completes one revolution per minute.

At 12 o'clock, the *Signature Mystérieuse*® - an automaton - showcases the Charles Girardier logo with the intertwined "C&G" on two elements pivoting on an axis. The energy required for this ballet is provided by a dedicated oscillating weight for this complication, concealed beneath the dial. With each movement of the wrist, kinetic energy will move the two elements in opposite directions, ultimately returning to the initial position when the wrist is tilted for time reading.

**Aesthetic detail:** The ladies' reference (37 mm watch diameter) is set with 54 diamonds: 0.15 ct for the *tourbillon* cage and 12 diamonds: 0.04 ct. for the *Signature Mystérieuses*® system.

**MOVEMENT**

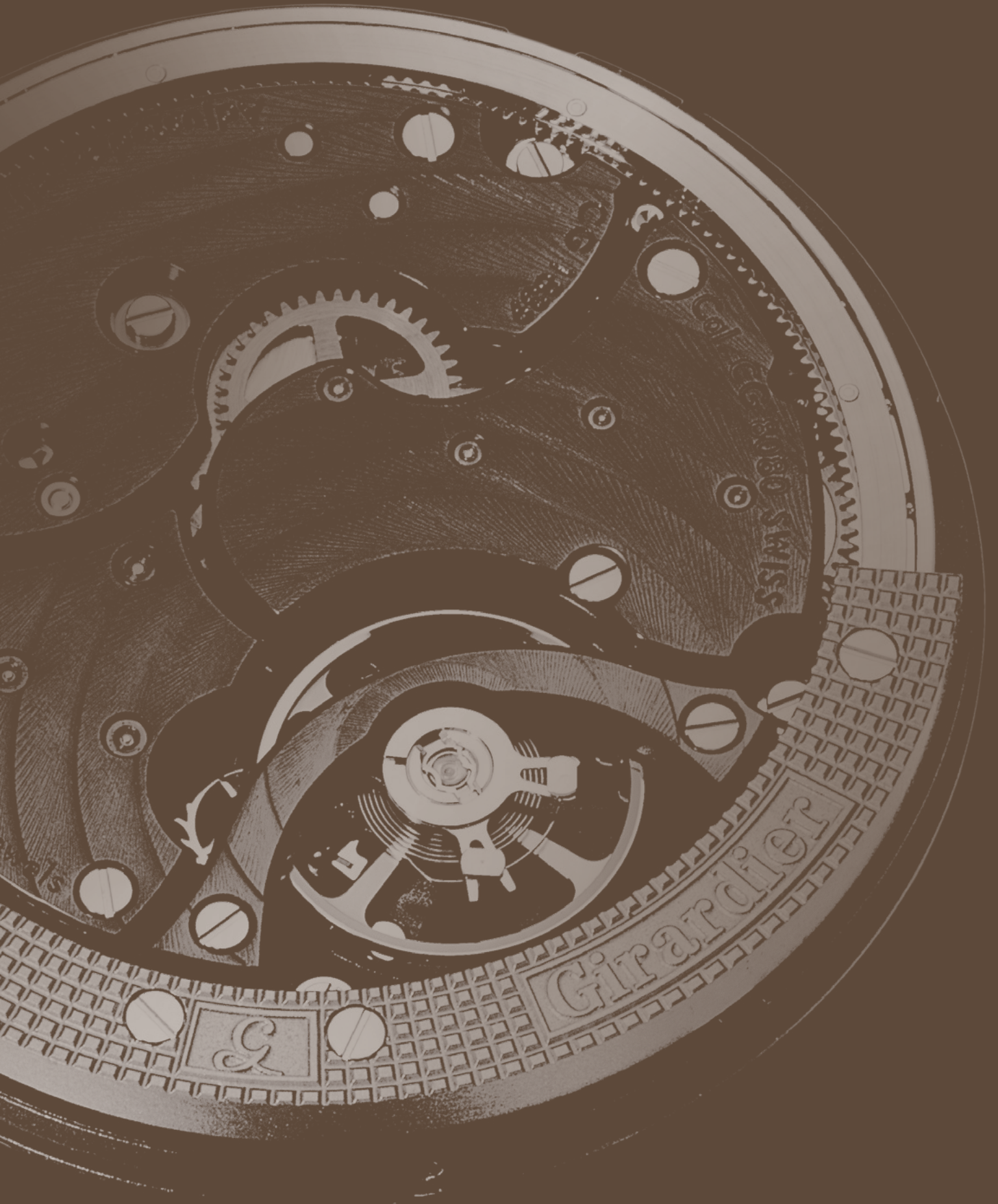
- > Self-winding by peripheral mass
- > Flying *tourbillon*
- > The *Signature Mystérieuse*® System
- > CG SM-1809/1/2/3/4/5/6 Caliber  
(Depending on the models)
- > Jewels: 32
- > Diameter: 30.6 mm
- > Thickness: 8.43 mm
- > Power reserve: 46 hours
- > Frequency: 28,800 Vph - 4 Hz
- > Number of parts: 308
- > The bridges and plates are hand-polished and silver-satin finish
- > Engraved Crown







G



# CG M8-8080 CALIBER THE MAGIC 8<sup>®</sup>

Dive into the world of the **CG M8-8080 caliber**, which powers our iconic watches from the 8080 collection. At the heart of this horological masterpiece lies the captivating story of the double second, a complication that adds a touch of magic to every beat.

Composed of 278 meticulously assembled components, this caliber embodies horological excellence. Each component contributes to the exceptional precision and performance of this creation, offering an unparalleled watchmaking experience.

The finishes pay true homage to exceptional craftsmanship: circular Geneva stripes embellish the surface of the bridges, while the bridges themselves are skillfully chamfered and hand-polished. This attention to detail is reflected in every aspect of this movement, emphasizing its refinement and timeless elegance.





Charles Girardier

CG M8-8080 CALIBER

30.6 MM

MAGIC 8®

Our collaboration with the Timeless manufacture has allowed us to create a unique complication based on a flying *tourbillon* movement with automatic winding by a peripheral mass. The automatic winding provides the desired comfort to the wearer without adding thickness (8.43 mm) and maintains a clear view of the movement thanks to this bidirectional mass evolving at the periphery of the movement. The special feature of the winding system developed by Timeless is a unique ball bearing, making it a first in this type of mechanism.

The decoration of this movement is highly aesthetic: the bridges undergo a black galvanic NAC treatment and a circular "Geneva stripes" (*Côtes de Genève*) finish. Additionally, the details of the caliber, the number of jewels, and its adjustment seamlessly match the colour of the dial. The bevelling of the bridges is meticulously executed by hand.

**This caliber features a complication:**

A double second complication. A double temporal sequence is expressed at 8 o'clock, where the number "8", sporting a horizontal satin finish with a fillet matching the dial colour, is formed by two opposing rotating hands. Thus, the number "8" disassembles and reassembles itself over a period of 60 seconds.

**Aesthetic detail:** each movement features an engraving (on the back) matching its dial colour.

MOVEMENT

- > Self-winding by peripheral mass decorated with *Clous de Paris*
- > CG M8-8080/1/2/3 Caliber
- > Jewels: 35
- > Diameter: 30.6 mm
- > Thickness: 4.57 mm
- > Power reserve: 44 hours
- > Frequency: 28,800 Vph - 4 Hz
- > Number of parts: 278
- > Circular Geneva stripes
- > Black NAC galvanic treatment for the bridges
- > Chamfered and hand-polished bridges







## IMPRESSUM

Brand Portfolio Charles Girardier available in French and English.

2024©Charles Girardier - V2 - February 2024.

Text writing, graphic direction, photography management, production management, photogravure: Christophe Michaud.

Printed in Switzerland.

---

**CG-Watches SA  
Office**

Gubelstrasse 36 | CH-8050 Zurich  
[www.charles-girardier.com](http://www.charles-girardier.com)

**Charles Girardier  
Les Ateliers**

Heinrich-Wehrli-Strasse 7 | CH-5033 Buchs

Phone. +41 43 443 92 04  
Mobile +41 79 247 76 54





